

Test Results

Pathogenic

Mutation in one of the breast cancer genes, BRCA1 or BRCA2, and therefore a much higher risk of developing breast cancer or ovarian cancer.

Likely Pathogenic

Alterations with strong evidence in favor of pathogenicity.

Variant of Unknown significance

Analysis finds a genetic variant that may or may not be associated with an increased risk of cancer.

No mutation detected

- No BRCA gene mutation was found



Why MammoArray-BRCA Test ?



- Maximizing patient care and increasing clinical efficiency.
- Significantly improve outcomes and reduce medical cost through earlier diagnosis and treatment of cancer.
- Greenarray uses Next generation sequencing to detect the mutations thereby giving accurate and sensitive results to the patients.

References :

- <http://cancerindia.org.in/cancer-statistics/>
- Roy, R., Chun, J., & Powell, S. N. (2011). BRCA1 and BRCA2: different roles in a common pathway of genome protection. Nature reviews. Cancer, 12(1), 68-78. <https://doi.org/10.1038/nrc3181>
- Mathur, P., Sathishkumar, K., Chaturvedi, M., Das, P., Sudashan, K. L., Santhappan, S., ... & ICMR-NCDIR-NCRP Investigator Group. (2020). Cancer Statistics, 2020: Report From National Cancer Registry Programme, India. JCO Global Oncology, 6, 1063-1075.
- Maivia, S., Bagadi, S. A., Dubey, U. S., & Saxena, S. (2017). Epidemiology of breast cancer in Indian women. Asia-Pacific Journal of Clinical Oncology, 13(4), 289-295.

About Greenarray

Greenarray is a molecular diagnostic company. We offer diagnosis of infectious diseases, genetic testing and healthcare information to improve health and wellness. Our goal is to provide high quality affordable and accessible services.

2nd Floor, Above P.N.Gadgil showroom, Happy colony, Kothrud, Pune- 411038, Maharashtra, India.

+91 98230 49121



BRCA 1 & 2 Genetic Test



THINK TODAY, ABOUT TOMORROW

BRCA 1 and BRCA 2 in Breast and ovarian cancer: Key Statistics

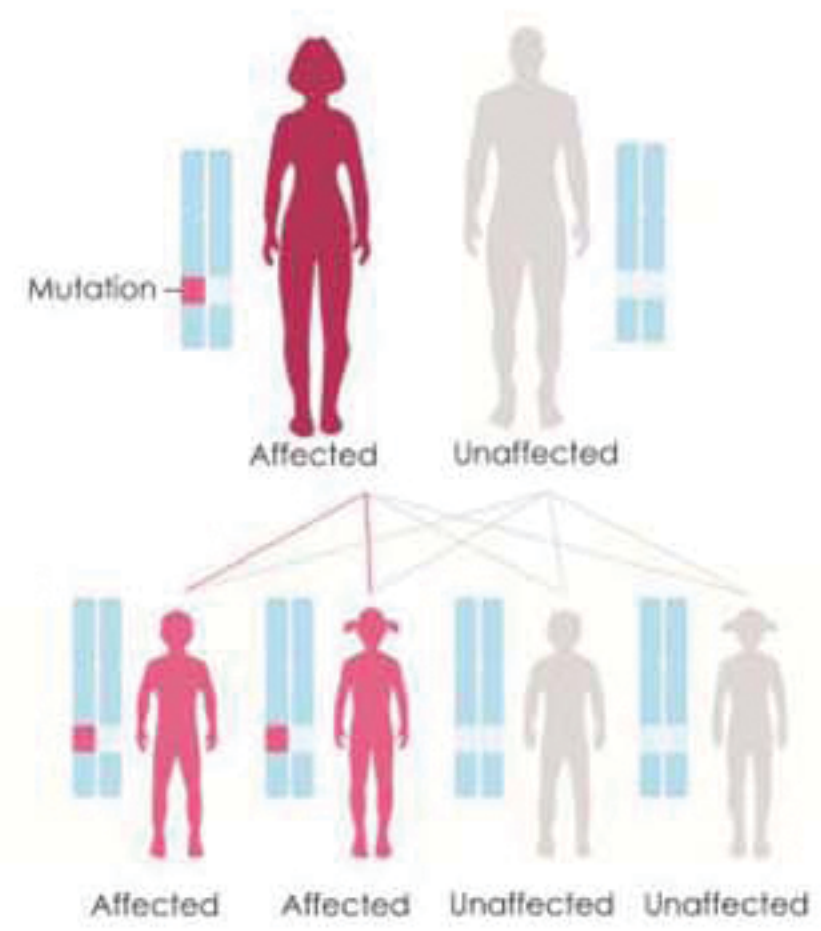


- Breast cancer has now become the most common cancer. In India approximately 1.4 lakh new cases are reported annually (ICMR).
- Mortality to incidence ratio is worst in India with 1 in 28 women is likely to develop breast cancer during her lifetime
- For every 2 women newly diagnosed with breast cancer, one woman succumbs to it in India (ICMR)

What are BRCA 1 and BRCA 2 ?

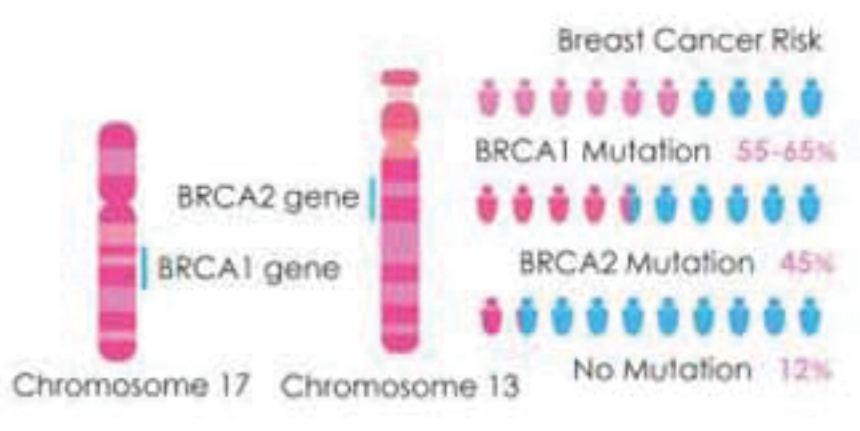
INHERITANCE PATTERN

Autosomal Dominant

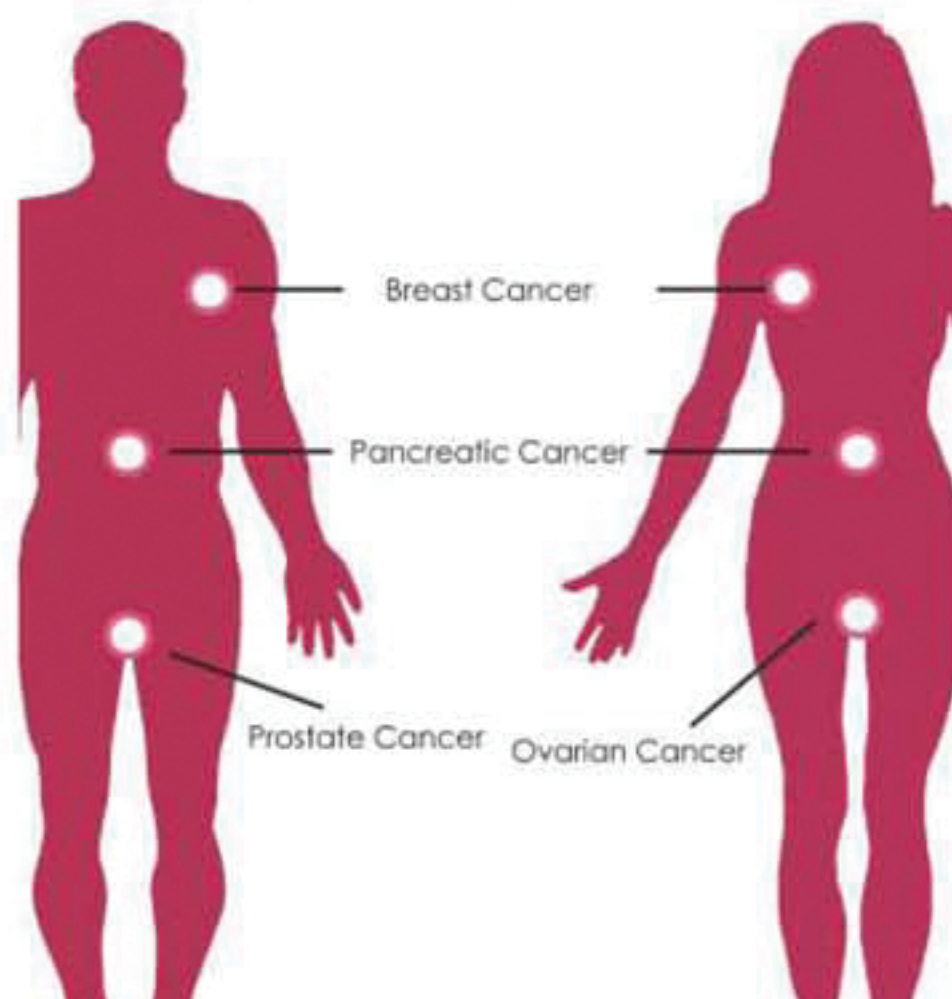


BRCA1 and BRCA2 are human genes that produces tumor suppressor proteins that helps to repair damaged DNA. Mutation in either BRCA1 or BRCA2 increases the chances of developing certain cancers, including breast, ovarian, prostate and pancreatic cancers. These gene mutations are hereditary and can be passed on to children from either parents.

Lifetime CANCER risks with a BRCA mutation



People with BRCA1 and BRCA2 mutations are known to have an increased risk of the following types of cancer



Who is at Risk?

- Women with breast, ovarian cancer, fallopian tube, or primary peritoneal cancer.
- Relatives of people who have a BRCA1 or BRCA2 mutation.
- Males with breast cancer
- People with pancreatic cancer who have also had breast or ovarian cancer in the same individual or on the same side of the family.

Methodology

